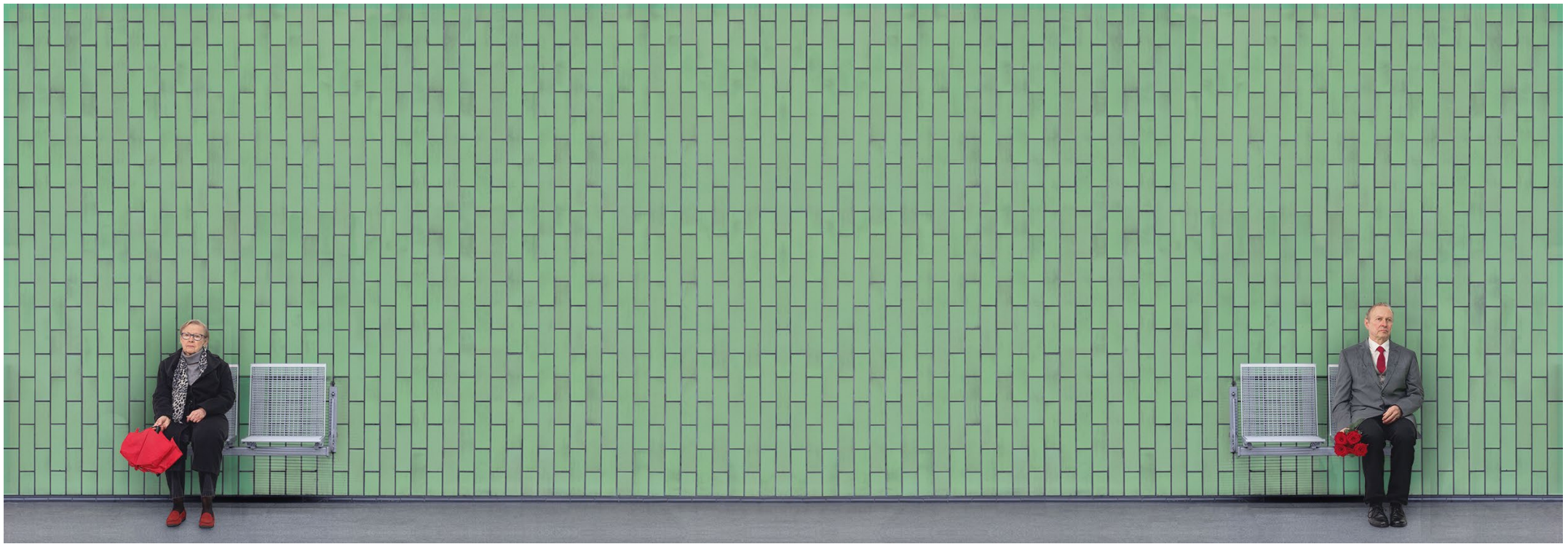


PORTFOLIO

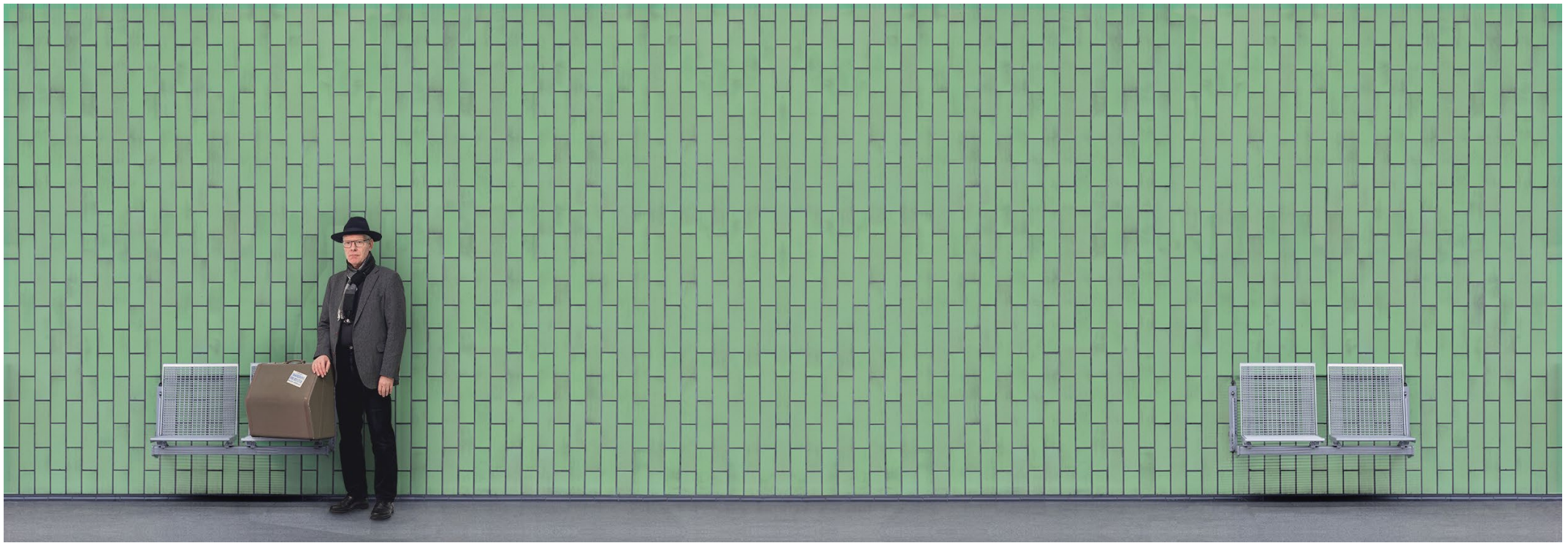
JOHANNA BASCHKE



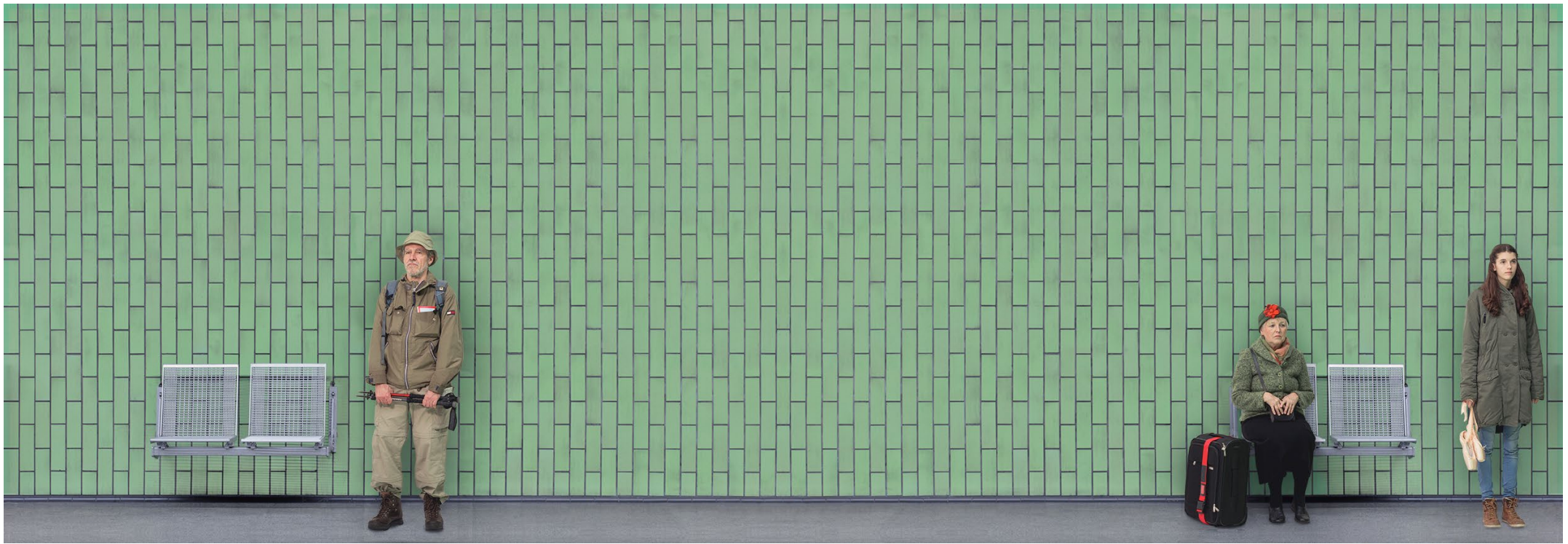
SERIEN



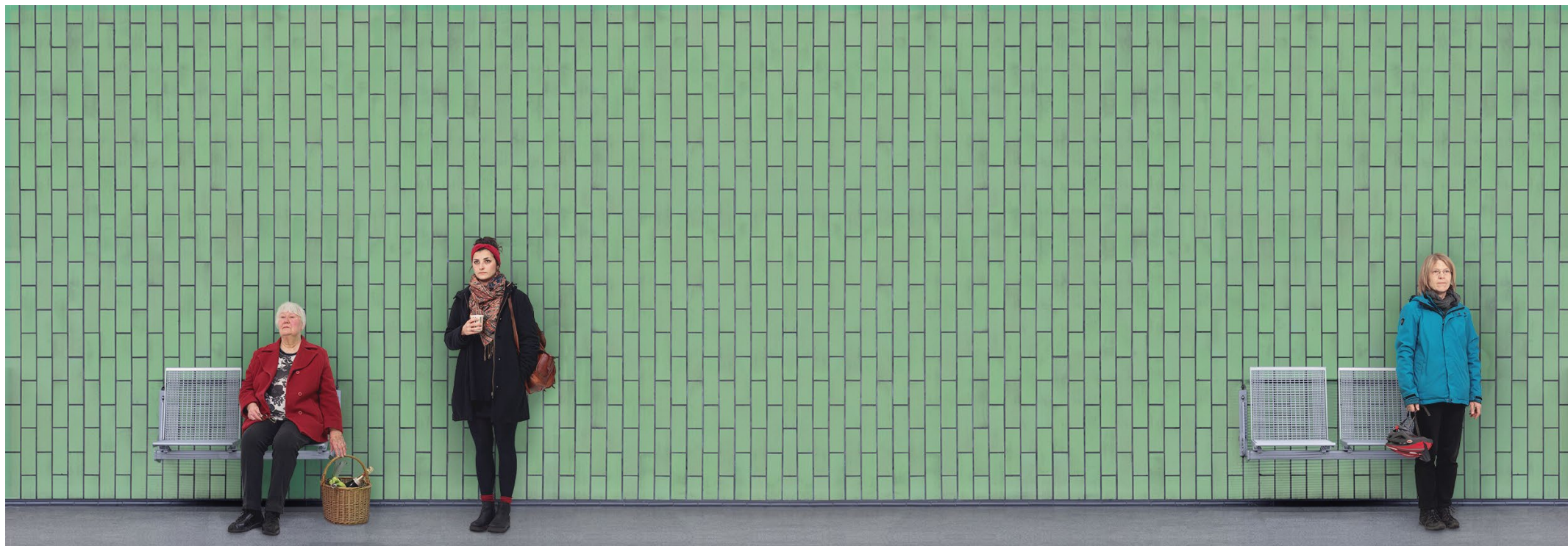
absence I, 2017, 88 cm x 30 cm



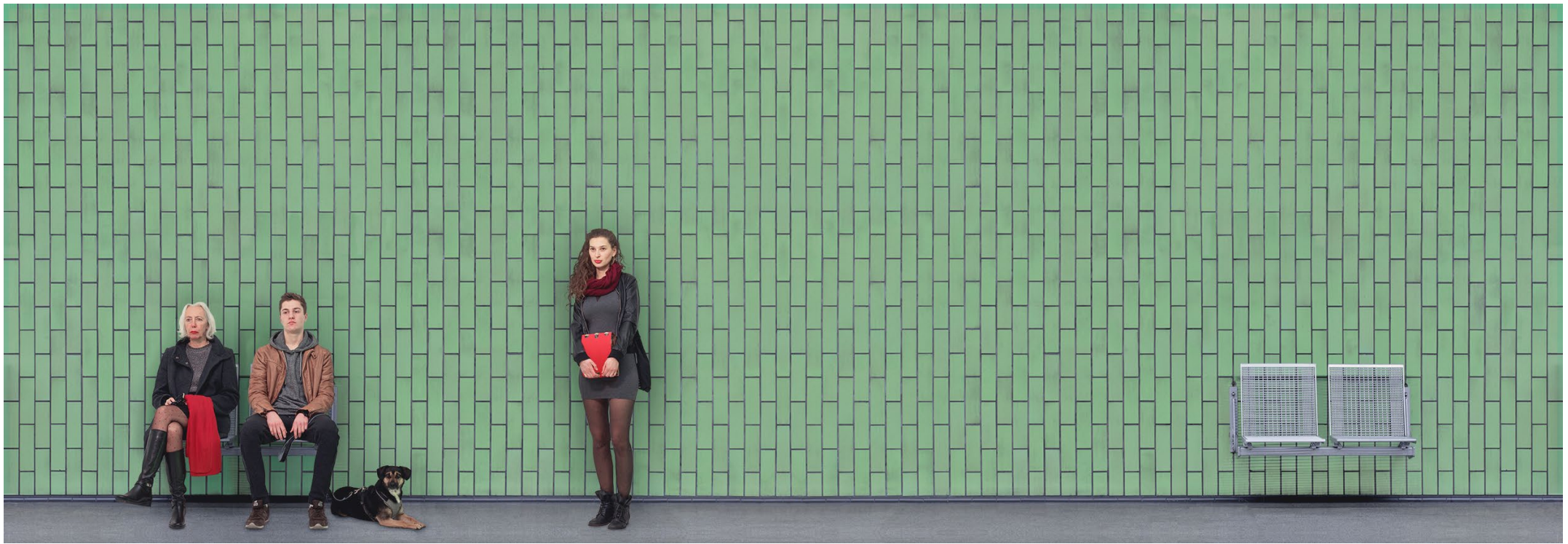
absence II, 2017, 88 cm x 30 cm



absence III, 2017, 88 cm x 30 cm



absence IV, 2017, 88 cm x 30 cm



absence V, 2017, 88 cm x 30 cm



absence VI, 2017, 88 cm x 30 cm

Strong men, 2017, 20 cm x 20 cm



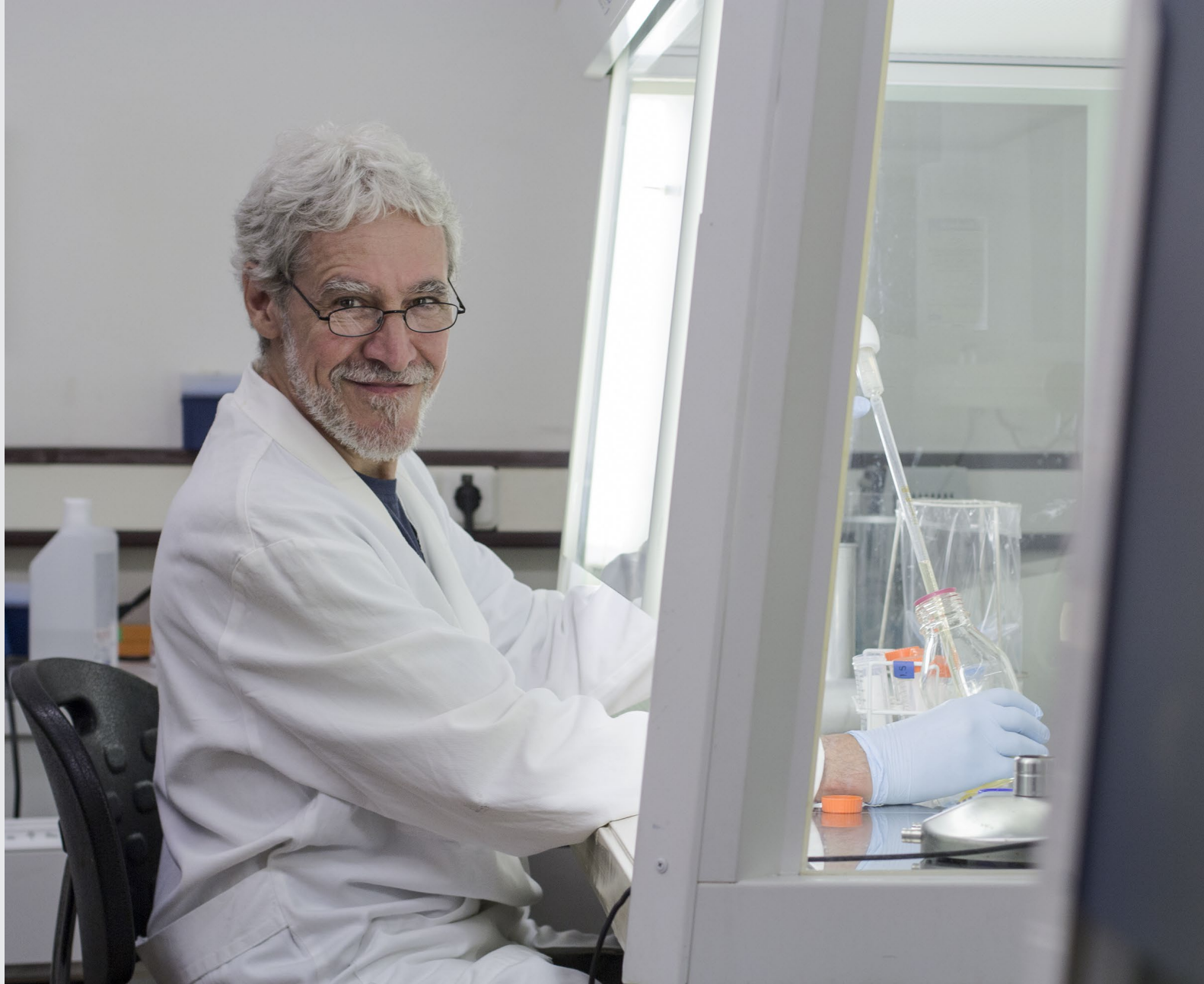
Peter is a strong man, he can mount a shelf.



Korbinian is a strong man, he refuses to be restricted in his right to think.



Philipp is a strong man, he isn't thin but happy.



Rainer is a strong man, he dedicates his life to science.



Uwe is a strong man, he swallows his tears.



grasslands, 2018, 90 cm x 60 cm



grasslands, 2018, 30 cm x 45 cm



grasslands, 2018, 30 cm x 45 cm



headland, 2018, 20 cm x 20 cm



give me a reason, 2018, 120 cm x 160 cm



give me a reason, 2018, 120 cm x 160 cm



give me a reason, 2018, 120 cm x 160 cm



give me a reason, 2018, 120 cm x 160 cm



give me a reason, 2018, 120 cm x 160 cm



give me a reason, 2018, 120 cm x 160 cm



give me a reason, 2018, 120 cm x 160 cm

EINZELBILDER



Von Hinten I, 2013, 60 cm x 40 cm



Von Hinten II, 2014, 60 cm x 40 cm



Von Hinten III, 2014, 60 cm x 40 cm



Von Hinten IV, 2014, 60 cm x 40 cm



Von Hinten V, 2016, 60 cm x 40 cm



Von Hinten VI, 2016, 60 cm x 40 cm



Ferrel, 2015, 90 cm x 60 cm



Baikal, Olchon, 2016, 90 cm x 50 cm



Salzsee, Merzouga, 2011, 120 cm x 80 cm



Bergsee, Ulaan Uul, 2016, 90 cm x 60 cm



Trondheim, 2014, 90 cm x 60 cm



Daverdisse, 2020, 90 cm x 50 cm



Daverdisse, 2020, 40 cm x 40 cm



Ulaanbataar, 2016, 42cm x 28 cm



Ulaanbataar, 2016, 42cm x 28 cm



Falte, Charchorin, 2016, 60 cm x 40 cm



Hohenstaufen, 2016, 60cm x 40 cm



Trondheim, 2014, 60 cm x 40 cm



Røros, 2014, 90 cm x 60 cm



Røros, 2014, 60 cm x 40 cm



Drei Berge, Hardangervidda, 2014, 60 cm x 40 cm



Hardangervidda, 2014, 60 cm x 40 cm



Castellet, 2018, 36 cm x 24 cm



Charchorin, 2016, 60 cm x 40 cm



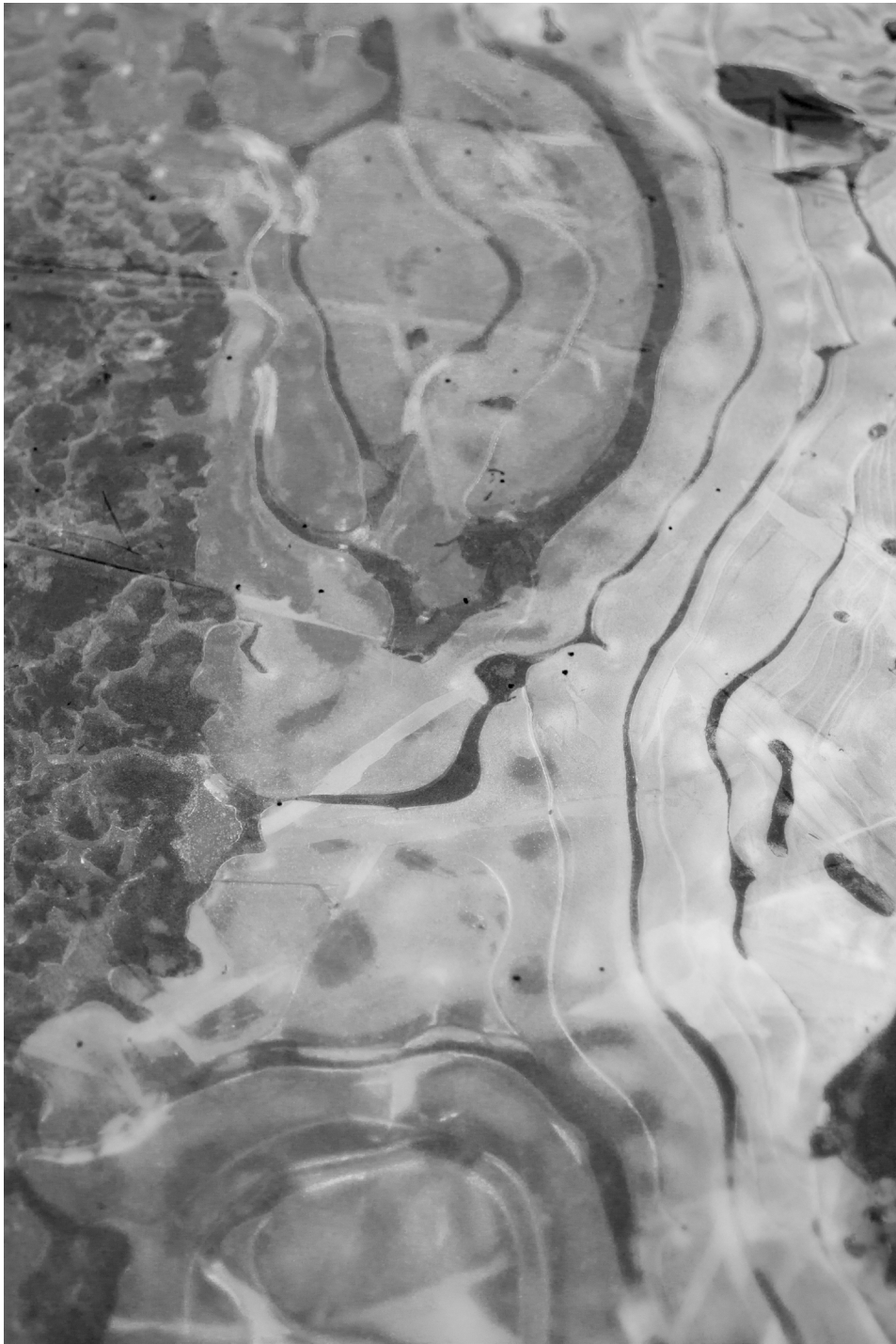
Stümpfe, Harz, 2019, 30 cm x 20 cm



Stümpfe, Harz, 2019, 18 cm x 12 cm



Daverdisse, 2020, 60 cm x 40 cm



Eis, Røros, 2014, 30 cm x 20 cm



Lofoten, 2018, 30 cm x 20 cm



Tel Aviv, 2014, 30 cm x 20 cm



Cañón del Atuel, 2018, 60 cm x 40 cm



Wolke, Storjord, 2018, 75 cm x 50 cm



Vogel, 2015, 30 cm x 20 cm



Where Genghis lost a stick, 2016, 90 cm x 60 cm



Runde, 2014, 60 cm x 40 cm



Fassade I, Bielefeld, 2020, 60 cm x 40 cm



Fassade II, Pritzerbe, 2019, 60 cm x 40 cm



Fassade III, Novosibirsk, 2016, 60 cm x 40 cm



Fassade IV, Novosibirsk, 2016, 30 cm x 24 cm



Fassade V, Brüssel, 2019, 26 cm x 39 cm



Sankt Petersburg, 2016, 60 cm x 40 cm



Novosibirsk, 2016, 60 cm x 40 cm



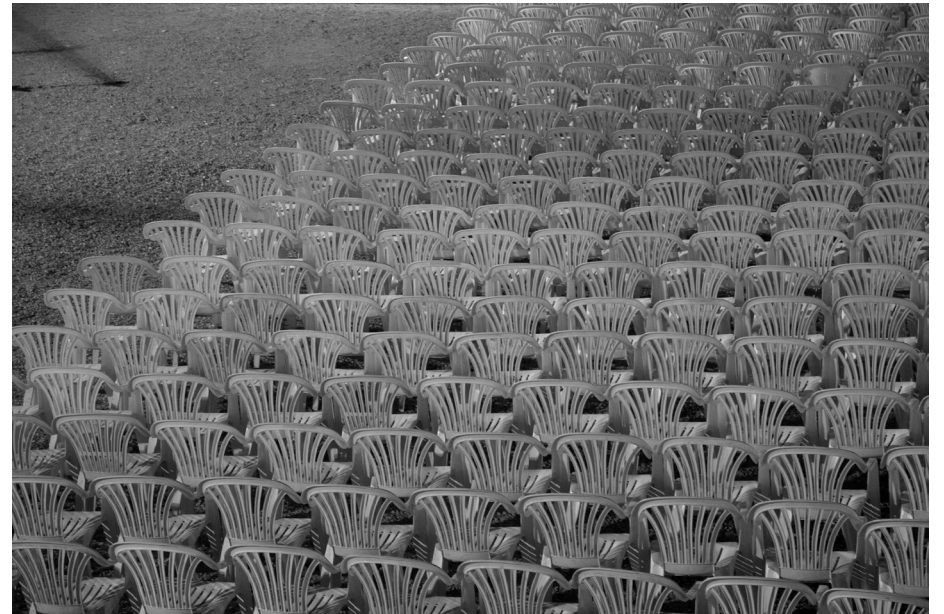
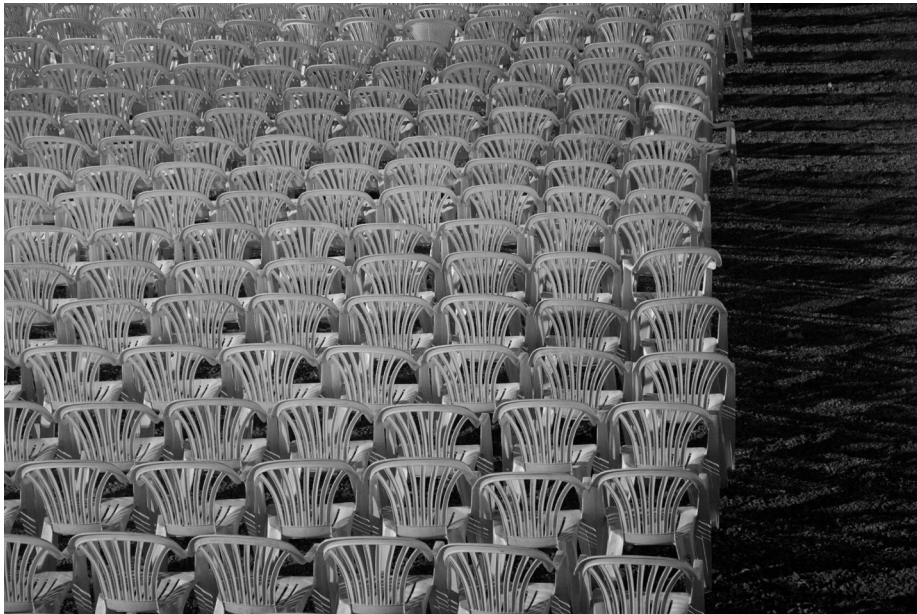
Pritzerbe, 2019, 21 cm x 15 cm



Buenos Aires, 2018, 20 cm x 30 cm



Gelb, Berlin, 2018, 40 cm x 60 cm



Stühle, Montevideo, 2018, 30 cm x 20 cm



Leipzig, 2020, 30 cm x 20 cm



Rochauhaut, 2018, 30 cm x 20 cm



Rochehaut, 2018, 30 cm x 20 cm



Neues Jahr, Hildesheim, 2016, 42 cm x 30 cm



Neues Jahr, Hildesheim, 2019, 42 cm x 30 cm



Bett, Brüssel, 2020, 60 cm x 40 cm



Brüssel, 2019, 30 cm x 20 cm



Haare, Bielefeld, 2020, 30 cm x 20 cm



Toilettengang, Ostende, 2019, 18 cm x 12 cm



Sicherheitsband, Berlin, 2018, 21 cm x 14 cm



Die Schafe, Osten, 2015, 30 cm x 20 cm



Der Fisch, Berlin, 2018, 24 cm x 16 cm



Die Raubkatze, Berlin, 2018, 24 cm x 16 cm



Das Reh, Berlin, 2018, 24 cm x 16 cm



Die Schwäne, Rochehaut, 2018, 96 cm x 54 cm

Johanna Baschke
Trufanowstraße 29
04105 Leipzig
+49 1573 6280553
info@johannabaschke.de
www.johannabaschke.de